

GENERATION & NETWORK

Residual Overvoltage Relay (Neutral Displacement Relay)

NPUH800

NPUH800 provides the zero-sequence voltage monitoring of three-phase networks with isolated or high impedance earthed neutral. This multi-function relay supervises phase to phase and phase to earth faults and the good operating of the circuit breaker and its trip circuits.

As well as the usual protection functions, NP800 relays provide monitoring, measurement and recording of the electrical quantities of the network. The relays can be set locally, using either the keypad and display or the RS232 port, or remotely using the RS485 port. Setting, reading, measurement and recording are all available locally or remotely.



Multifunction
Measurement
Recording / event log
Disturbance recording
Local MMI

Protection function

- Maximum of zero sequence voltage with 2 thresholds **[59N]**

Additional functions

- Latching of the output contacts **[86]**
- Trip circuit supervision of the breaker **[74TC]**



CEE Relays Ltd

CHARACTERISTICS NPUH800

Auxiliary Supply

- Auxiliary supply ranges
- Typical burden
- Memory backup

19 to 70 – 85 to 255 / Vdc or Vac 50 or 60 Hz
6 W (DC), 6 VA (AC)
72 hours

Analogue inputs

- VT nominal value

Un: 33 to 120 V
input impedance > 80 kΩ
Continuous rating 240 V, short duration withstand 275V - 1 min
measurement from 1 to 240 V
VT setting: primary value from 220 V to 250 kV
measurement: 45 to 55 Hz or 55 to 65 Hz

- Frequency (50Hz or 60Hz)

Digital inputs 4 or 8 according option

- Polarizing voltage
- Level 0
- Level 1
- Operating of the input by level 1 or 0
- Burden

20 to 70 Vdc for 19 to 70 V auxiliary supply range
37 to 140 Vdc for 85 to 255 V auxiliary supply range
< 10Vdc range 19 to 70 V – < 33Vdc range 85 to 255 V
> 20Vdc range 19 to 70 V – > 37Vdc range 85 to 255 V
programmable
< 15 mA

Output Relays 3* or 7 according option + 1 WD

- Relays A*, B*, E, F:
- (signalling, Shunt Opening Release)

double contact NO, permanent current 8 A
closing capacity 12 A / 4 s
short circuit current withstand 100 A / 30 ms
breaking capacity DC with L/R = 40 ms: 50W
breaking capacity AC with $\cos \varphi = 0.4$: 1250 VA
changeover contact, permanent current 16 A
closing capacity 25 A / 4 s
short circuit current withstand 250 A / 30 ms
breaking capacity DC with L/R = 40 ms: 50W
breaking capacity AC with $\cos \varphi = 0.4$: 1250 VA
adjustable from 100 to 500 ms
by the setting software
capital letters or digits

- Relays C*, D, G & WD:
(control, WD: Watchdog)
(C, D, G: programmable for CB Shunt
Opening Release or Under Voltage
Release)
- Relays pulse, except WD
- Assignment of name to the output
maximum of 16 characters

Max of zero sequence voltage [59N]

- Measurement method (according wiring)

- Setting of thresholds $V_{0>} - V_{0>>}$
- Thresholds accuracy
- Reset percentage on the operating level
- Instantaneous operating time
- Definite time delays
- Accuracy of the time delays
- Accuracy of displayed measures

calculated: 3 phase and neutral connection
measured: with 1 neutral point VT or 3 VT with broken delta
2 to 80 % Un
2% of Un
97%
60 ms including trip relay $V_0 \geq 2 V_s$
40 ms to 300 s
 $\pm 2\%$ or 20 ms
3% from 3 to 240 V

Trip circuit supervision of the breaker [74TC]

- Trip circuit supervision
- Operating time (in faulty condition)

requires four digital inputs (see application guide)
500 ms fixed

Latching of the output contacts [86]

- Latching of output relays
- Reset

A, B, C and with option: D, E, F, G (programmable assignment)
digital input, digital communication or local MMI

Digital inputs assignment

- By setting software
- Setting table selection
- Disturbance recording order
- Interlock o/o
- Interlock c/o
- Control mode
- Reset [86] function
- Trip circuit supervision
- CB trip external order
- Input – output programmable functions

set 1 – set 2

dedicated to remote control, local / remote
acknowledgment of the selected output(s)
[74TC] function
function [74TC] blocked if external trip order

CHARACTERISTICS NPUH800

User programmable functions (digital inputs – digital outputs)

- Status of the function in or out of service, by local MMI or by the setting software
- Tripping mode or report report: for time stamping and event recorder
- Operating and release time delays tripping mode: 40 ms to 300 s
- Assignment of name to the function, maximum of 14 characters by the setting software
- Assignment of one or more output relays (alarm or trip) by local MMI or by the setting software
A, B, C and with option: D, E, F, G

Load shedding – Load Restoration, remote control (communication option)

- Load shedding level 1 to 6
- Time delay before reclosing 1 to 120 s, $\pm 2\%$
- Reclosing pulse 100 to 500 ms (remote control)
- Output relays assigned programmable by local MMI or by setting software
A, B, C and with option: D, E, F, G

Digital outputs assignment

- By local MMI or by setting software

Signalling LEDs assignment

- By setting software

Man Machine Interface

- Relay display 2 lines of 16 characters
- Language French, English, Spanish, Italian
- Configuration and operating software Windows® 2000, XP, Vista and 7 compatible
- Language French, English, Spanish, Italian

MODBUS® Communication (option)

- Transmission asynchronous series, 2 wires
- Interface RS 485
- Transmission speed 300 to 115 200 bauds

Disturbance recording

- Number of recordings 4
- Total duration 52 periods per recording
- Pre fault time adjustable from 0 to 52 cycles

Climatic withstand in operation

- Cold exposure IEC / EN 60068-2-1: class Ad, -10 °C
- Dry heat exposure IEC / EN 60068-2-2: class Bd, +55 °C
- Damp heat exposure IEC / EN 60068-2-3: class Ca, 93 % HR, 40 °C, 56 days
- Temperature variation with specified speed IEC / EN 60068-2-14: class Nb, -10 °C to +55 °C, 3 °C/min

Storage

- Cold exposure IEC / EN 60068-2-1: class Ad, -25 °C
- Dry heat exposure IEC / EN 60068-2-2: class Bd, +70 °C

Electrical safety

- Ground bond test current IEC / EN 61010-1: 30 A
- Impulse voltage withstand IEC / EN 60255-5: 5 kV MC, 5 kV MD (waveform: 1.2/50 μ s) except Digital Output, 1 kV differential mode except RS485, 3 kV common mode
- Dielectric withstand (50Hz or 60Hz) IEC / EN 60255-5: common mode 2 kV_{rms} – 1 min differential mode for Digital Output 1 kV_{rms} – 1 min (contact open)
- Insulation resistance IEC / EN 60255-5: 500 Vdc - 1 s: > 100 M Ω
- Clearance and creepage distances IEC / EN 60255-5: rated insulation voltage: 250 V pollution degree: 2 overvoltage category: III

Enclosure safety

- Degree of protection provided by enclosures (IP code) IEC / EN 60529: IP51, with front face

CHARACTERISTICS NPUH800

Immunity – Conducted disturbances

- Immunity to RF conducted disturbances
- Fast transients
- Oscillatory waves disturbance

IEC / EN 61000-4-6: class III, 10 V
IEC / EN 60255-22-4 / IEC / EN 61000-4-4: class IV
IEC / EN 60255-22-1: class III, 2.5 kV CM, 1 kV DM
except RS485, class II, 1 kV CM

- Surge immunity
- Supply interruptions

IEC / EN 61000-4-5: class III
IEC / EN 60255-11: 100% 20 ms

Immunity – Radiated disturbances

- Immunity to RF radiated fields
- Electrostatic discharges
- Power frequency magnetic field immunity test

IEC / EN 60255-22-3 /
IEC / EN 61000-4-3: class III, 10 V/m
IEC / EN 60255-22-2 /
IEC / EN 61000-4-2: class III, 8 kV air / 6 kV contact
IEC / EN 61000-4-8: class IV, 30 A/m continuous, 300 A/m 1 to 3 s

Mechanical robustness - energised

- Vibrations
- Shocks

IEC / EN 60255-21-1: class 1 - 0.5g
IEC / EN 60255-21-2: class 1 - 5g / 11 ms

Mechanical robustness - not energised

- Vibrations
- Shocks
- Bumps
- Free fall

IEC / EN 60255-21-1: class 1 - 1g
IEC / EN 60255-21-2: class 1 - 15g / 11 ms
IEC / EN 60255-21-2: class 1 - 10g / 16 ms
IEC / EN 60068-2-32: class 1 - 250 mm

Electromagnetic compatibility (EMC)

- Radiated field emissivity
- Conducted disturbance emissivity

EN 55022: class A
EN 55022: class A

Presentation

- Height
- Width
- Brackets 19" rack mounting

4U
¼ 19"
option (see drawing D37739)

Case

- H, W, D without connector
- Weight

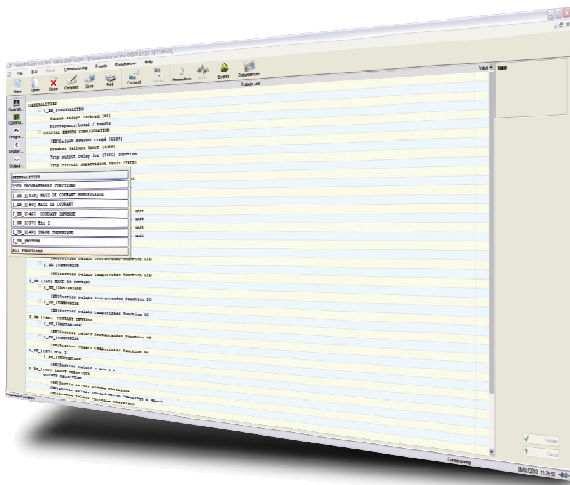
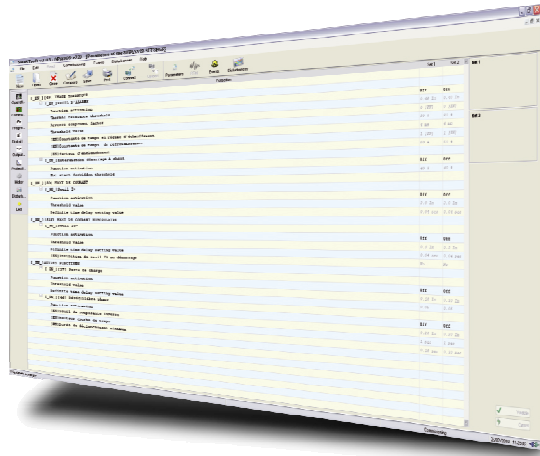
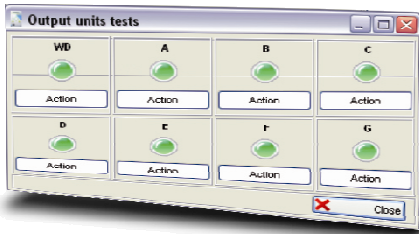
173 x 106.3 x 250 mm (see drawing D37739)
3.6 kg

Connection - codification

- See diagram S38026

SMARTsoft

SMARTsoft, integrated software for the Industry, Railway and Transmission ranges, helps the User get the best from NP800 series relays.



SMARTsoft
User friendly
Diagnosis
Fault analysis
Maintenance tools



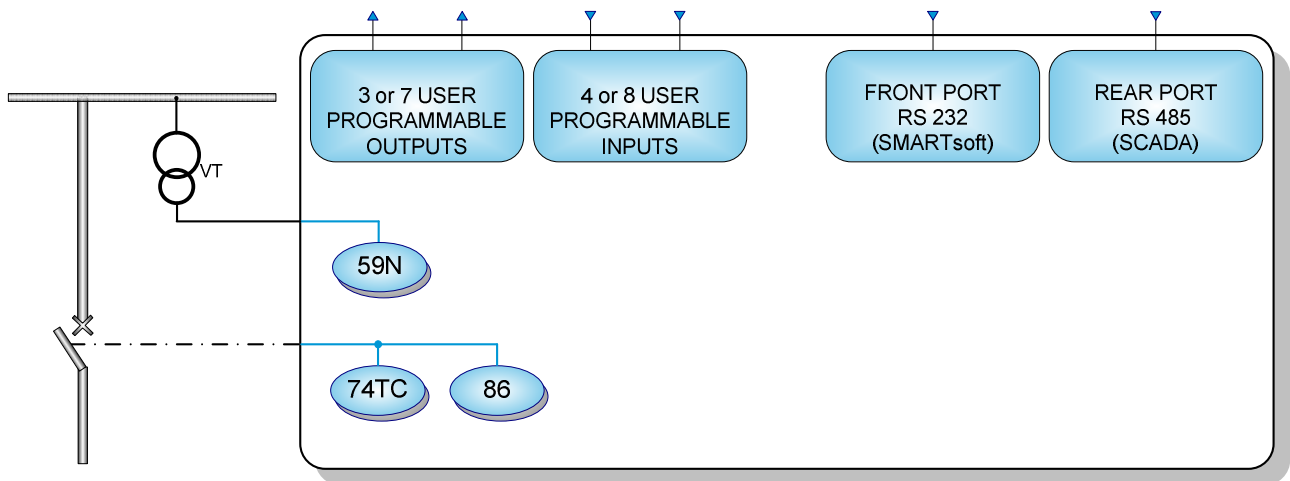
Functionalities

- 2 ranges of auxiliary supply
- Storage of the lack and the restoration of the auxiliary voltage (time stamped events)
- Configuration and parameter setting by local MMI or off-line / on-line PC
- Measurement of electrical quantities:
Display expressed in primary values
Residual voltage and maximum values
- Instantaneous alarm threshold
- Definite time tripping for thresholds
- 2 setting groups, locally or remotely selectable
- CB Monitoring: interlocks discrepancy, local or remote control of reclosing / tripping
- Remote control by communication channel:
tripping or closing, load shedding with priority levels and load restoration
- Setting software compatible with Windows® 2000, XP, Vista and 7
- User interface with access to all protection functions
- Time stamping of internal events with 10ms resolution
- Time stamping of digital inputs with 10ms resolution
- Event recording: 250 locally recorded events, 200 saved in case of loss of auxiliary supply
- Recording of logical states of digital I/O, of measures, of current setting group
- Local / remote events acknowledgment
- Disturbance recording according to Comtrade® format: storage of 4 recordings of 52 periods
- Disturbance recording forced by digital input, setting software or communication channel
- Remote setting, remote reading of measurements, counters, alarms and parameters settings
- Remote reading of disturbance recording and event log
- Self-diagnosis: Memories, output relays, A/D converters, auxiliary supply, cycles of execution of software, hardware failure

Options

- Communication by Modbus® - (IEC 60870-5-103 protocol: consult us)
- Additional card with 4 assignable output relays and 4 assignable digital inputs

Functional diagram



The specifications and drawings given are subject to change and are not binding unless confirmed by our specialists.



CEE Relays Ltd
87C Whitby Road, Slough, SL1 3DR (Registered Office)
Tel: +44 1753 576477 Fax: +44 1753 825661
Web: www.cceerelays.co.uk

